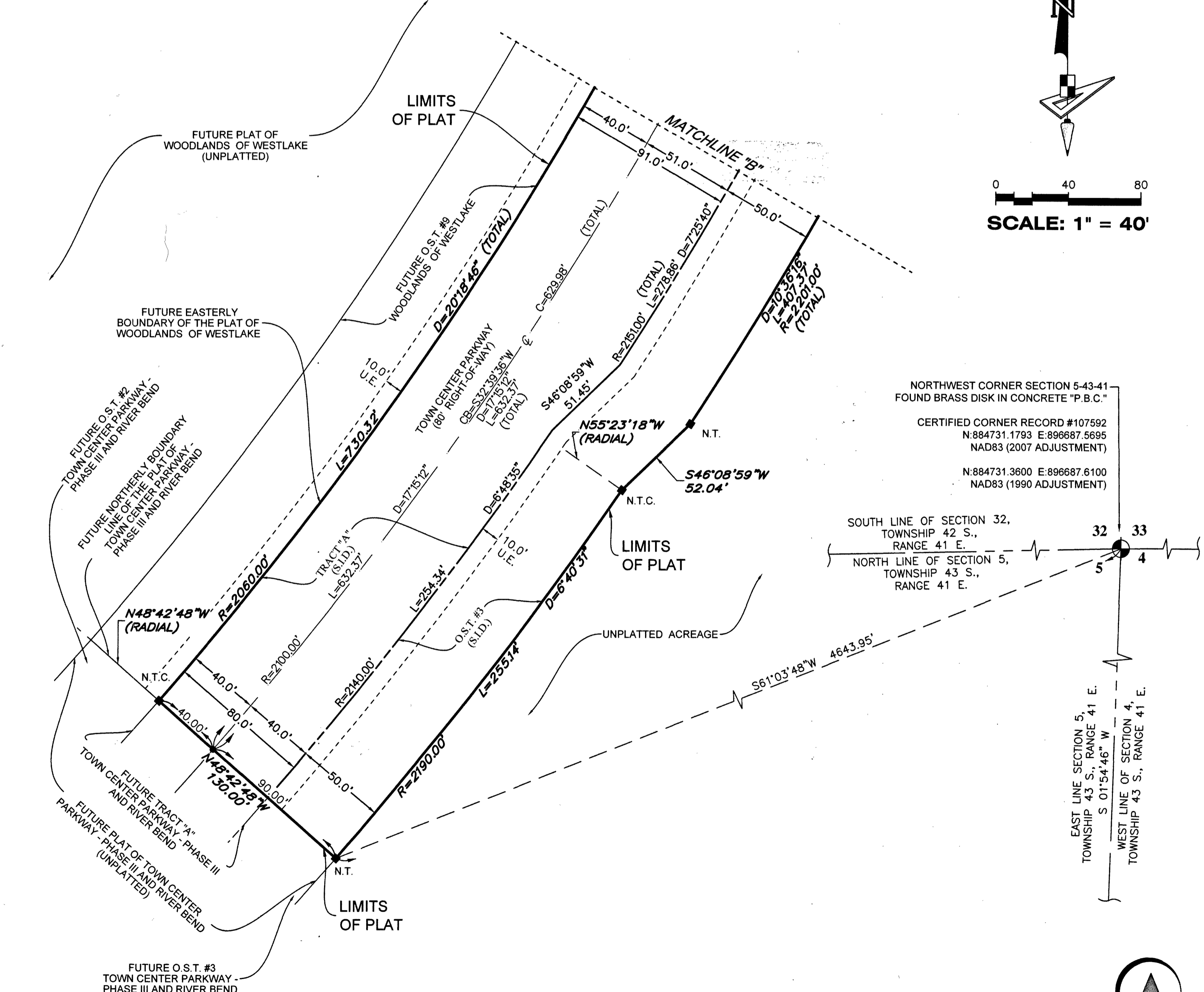
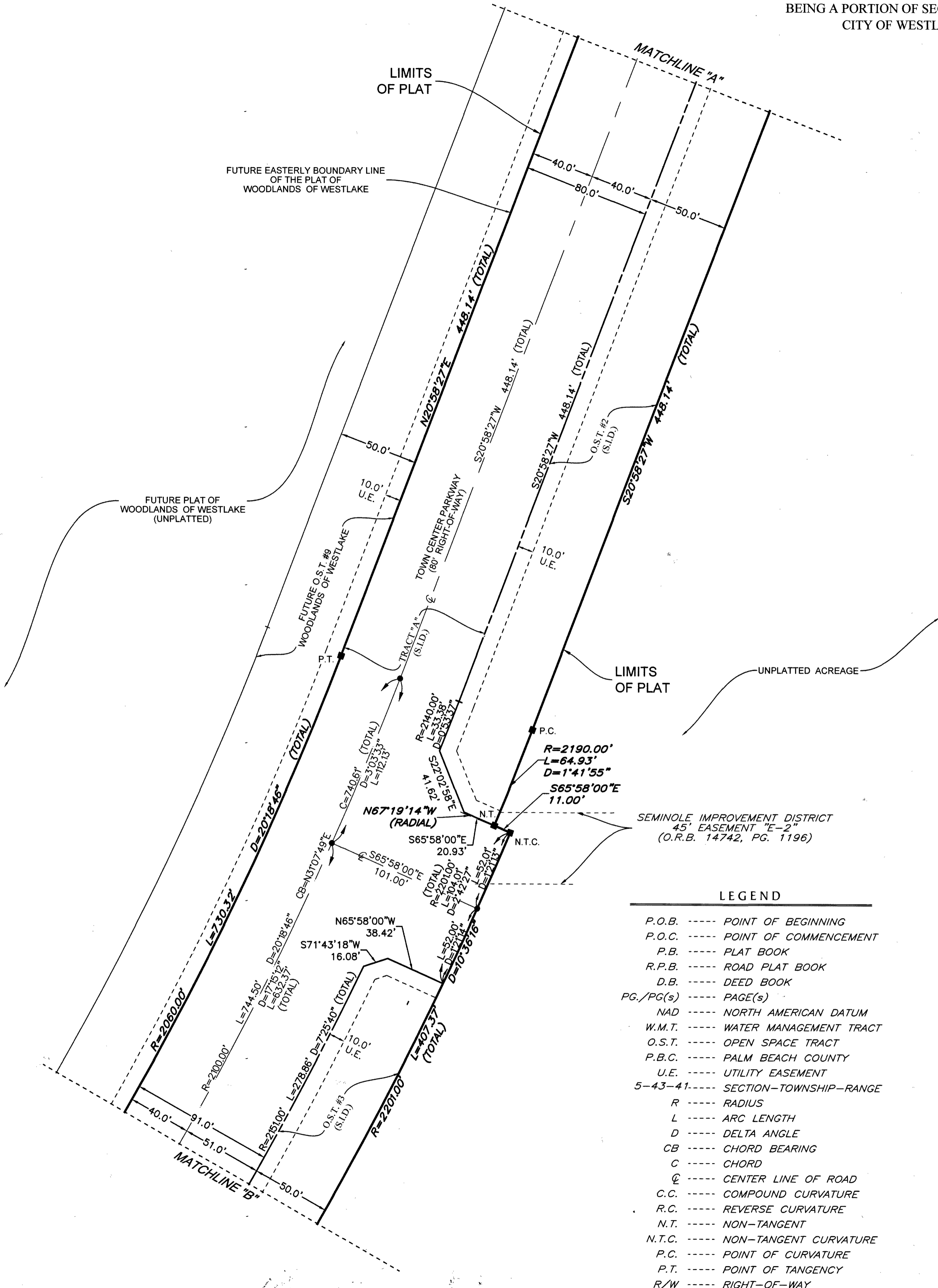
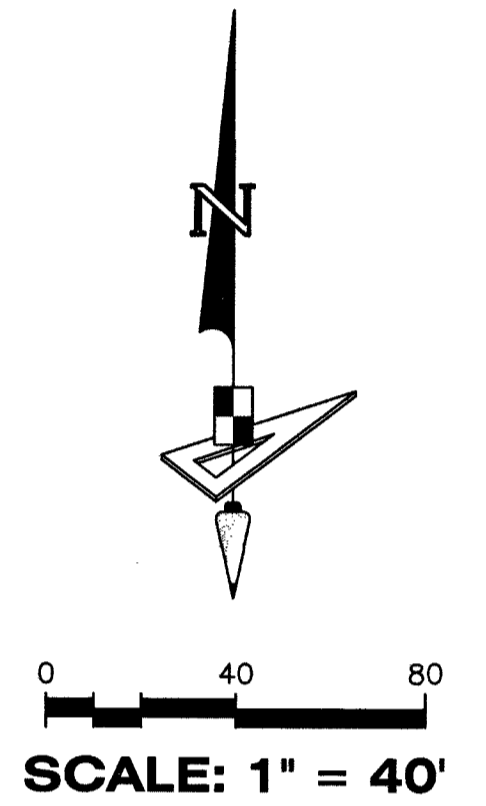
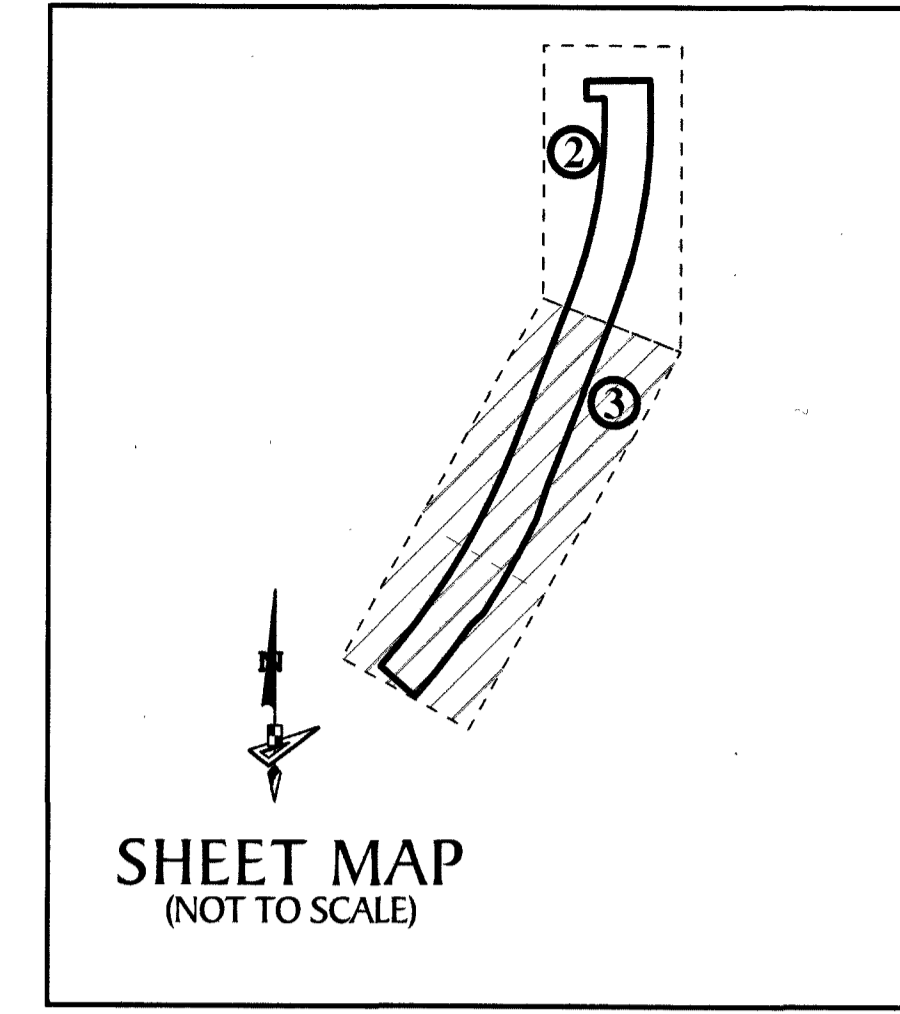


TOWN CENTER PARKWAY - PHASE IV

BEING A PORTION OF SECTION 5, TOWNSHIP 43 SOUTH, RANGE 41 EAST,
CITY OF WESTLAKE, PALM BEACH COUNTY, FLORIDA

178



- LEGEND**
- P.O.B. ----- POINT OF BEGINNING
 - P.O.C. ----- POINT OF COMMENCEMENT
 - P.B. ----- PLAT BOOK
 - R.P.B. ----- ROAD PLAT BOOK
 - D.B. ----- DEED BOOK
 - PG./PG(s) ----- PAGE(S)
 - NAD ----- NORTH AMERICAN DATUM
 - W.M.T. ----- WATER MANAGEMENT TRACT
 - O.S.T. ----- OPEN SPACE TRACT
 - P.B.C. ----- PALM BEACH COUNTY
 - U.E. ----- UTILITY EASEMENT
 - 5-43-41 ----- SECTION-TOWNSHIP-RANGE
 - R ----- RADIUS
 - L ----- ARC LENGTH
 - D ----- DELTA ANGLE
 - CB ----- CHORD BEARING
 - C ----- CHORD
 - CL ----- CENTER LINE OF ROAD
 - C.C. ----- COMPOUND CURVATURE
 - R.C. ----- REVERSE CURVATURE
 - N.T. ----- NON-TANGENT
 - N.T.C. ----- NON-TANGENT CURVATURE
 - P.C. ----- POINT OF CURVATURE
 - P.T. ----- POINT OF TANGENCY
 - R/W ----- RIGHT-OF-WAY
 - S.I.D. ----- SEMINOLE IMPROVEMENT DISTRICT
 - PRM ----- PERMANENT REFERENCE MONUMENT
 - ----- PERMANENT CONTROL POINT
 - ----- FOUND PERMANENT REFERENCE MONUMENT
 - ----- SET 4"x4" CONCRETE MONUMENT WITH 2" ALUMINUM DISK STAMPED "PRM LB 7768"

NORTHWEST CORNER SECTION 5-43-41
FOUND BRASS DISK IN CONCRETE "P.B.C."

CERTIFIED CORNER RECORD #107592
N:884731.1793 E:896687.5695
NAD83 (2007 ADJUSTMENT)

N:884731.3800 E:896687.6100
NAD83 (1990 ADJUSTMENT)

SOUTH LINE OF SECTION 32,
TOWNSHIP 42 S.,
RANGE 41 E.

NORTH LINE OF SECTION 5,
TOWNSHIP 43 S.,
RANGE 41 E.

